



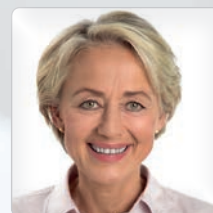
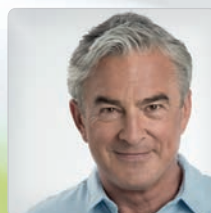
JOYCEone

Your number 1 choice for a perfect fit in no time.



JOYCEone

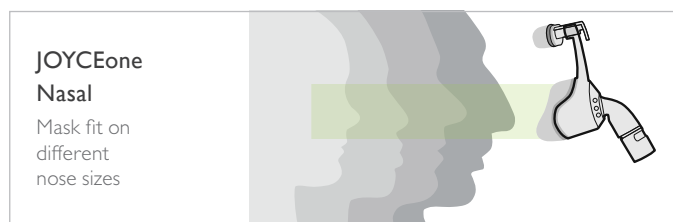
made for you!



JOYCEone

Your number 1 choice for a perfect fit in no time.

Time-consuming settings are history. Today we offer you JOYCEone, the ventilation mask in one size that fits nearly everyone. This mask, the result of years of experience and mask expertise, is available in a nasal or full face model.



JOYCEone Nasal

Mask fit on
different
nose sizes



JOYCEone Full Face

Mask fit on
range of nose
and face sizes

Hand-in-hand: comfort and effective therapy

The forehead support's spring action automatically ensures that the proper distance is maintained for patient comfort and effective therapy. The single layer mask cushion is just as cleverly designed. It finds the ideal position on its own, regardless of the size and shape of the patient's nose and face.

Design is in the details

Your patients will love JOYCEone! This mask features more than a perfect fit and wearing comfort. The unmistakable color-coding of headgear and clips and the convenient recessed grip help your patient to assemble JOYCEone quickly and correctly right from the start.

Modern Efficiency

Short and sweet: the intelligent JOYCEone helps you to save time without compromising on patient care.

JOYCEone – made for you!

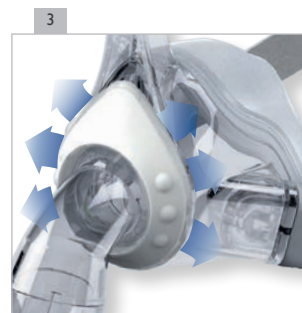
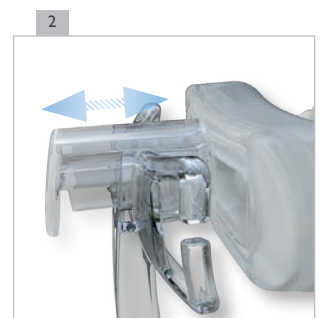


www.ValaDarman.com
info@ValaDarman.com
Tel +98 21 9107 011



The advantages of JOYCEone

- Saves time: automatic adjustment of forehead support and mask cushion **2**
- Unmistakable assembly: color-coding on headgear and clips **4**
- Economical: one size fits nearly all patients
- Convenient: effortless cleaning
- Pleasant: quiet and diffuse exhalation system **3**
- Stable: very durable materials



Product name

JOYCEone Nasal

JOYCEone Full Face

JOYCEone Full Face NV

Ord. Nr.

WM 25260

WM 25290

WM 25270

Accessories

Headgear
incl. headgear clips
WM 25255



Mask cushion
JOYCEone Nasal
silicone
WM 25253



JOYCEone Full Face
silicone
WM 25293



Ball-and-socket joint set,

JOYCEone Nasal
retaining ring, elbow,
rotating sleeve, plug
WM 15908



JOYCEone Full Face
retaining ring, elbow,
anti-asphyxia valve,
rotating sleeve, plug
WM 15944



Forehead cushion
silicone,
WM 26801



Endoscope adapter set

JOYCEone Full Face NV
retaining ring NV,
endoscope elbow NV
WM 15864



Elbow set

JOYCEone Full Face NV
retaining ring NV, elbow NV
WM 25269



Quick release cord
Quick-release system
WM 26890



You'll find more information about our therapy solutions, accessories and mask systems at loewensteinmedical.de

Technical data

	JOYCEone Nasal	JOYCEone Full Face	JOYCEone Full Face NV		JOYCEone Nasal	JOYCEone Full Face	JOYCEone Full Face NV
Product class according to 93/42/EEC IIa	II a			Flow resistance • at 50 l/min • at 100 l/min	0.05 hPa 0.28 hPa		0.08 hPa 0.32 hPa
Dimensions (W x H x D)	ca. 96 x 115 x 83 mm	ca. 120 x 150 x 100mm		Anti-asphyxia valve flow resistance • Inspiration at 50 l/min: • Exhalation at 50 l/min:	— —	0.5 hPa 0.5 hPa	— —
Weight	87 g	100 g	95 g	Switching pressure for anti-asphyxia valve • Open: • Close:	— —	1 hPa 2 hPa	— —
Therapy pressure range	4 to 30 hPa			Quoted two-figure noise emission value according to ISO 4871: • Sound pressure level: • Sound power level: • Uncertainty factor:	15 dB(A) 23 dB(A) 3 dB(A)		— — —
Hose connection: Cone according to EN ISO 5356-1	Ø 22 mm (male)		Ø 22 mm (female)	Service life	up to 12 months ¹		
Pressure measurement port	Ø 4 mm		—	Standards applied	EN ISO 17510-2:2009		
Width of headgear clips	24 mm						
Temperature range • Operation: • Storage:	+5 °C to +40 °C -20 °C to +70 °C						

¹ Materials used in the manufacture of masks age when exposed to aggressive cleaning products. Therefore, it may sometimes be necessary to replace mask parts earlier.

CE 0197

Löwenstein Medical UK
Trident Court, 1 Oakcroft Road, KT9 1BD Chessington
United Kingdom
T: +44 208 391308-0
F: +44 208 391678
info@loewensteinmedical.uk
www.loewensteinmedical.uk

Löwenstein Medical Technology
Kronsaalsweg 40, 22525 Hamburg
Deutschland
T: +49 40 54702-0
F: +49 40 54702-461
info@loewensteinmedical.de
www.loewensteinmedical.de

LÖWENSTEIN
medical

VDA
والا درمان امیرکبیر

www.ValaDarman.com
info@ValaDarman.com
Tel +98 21 9107 011

